



## Hello Melbourne

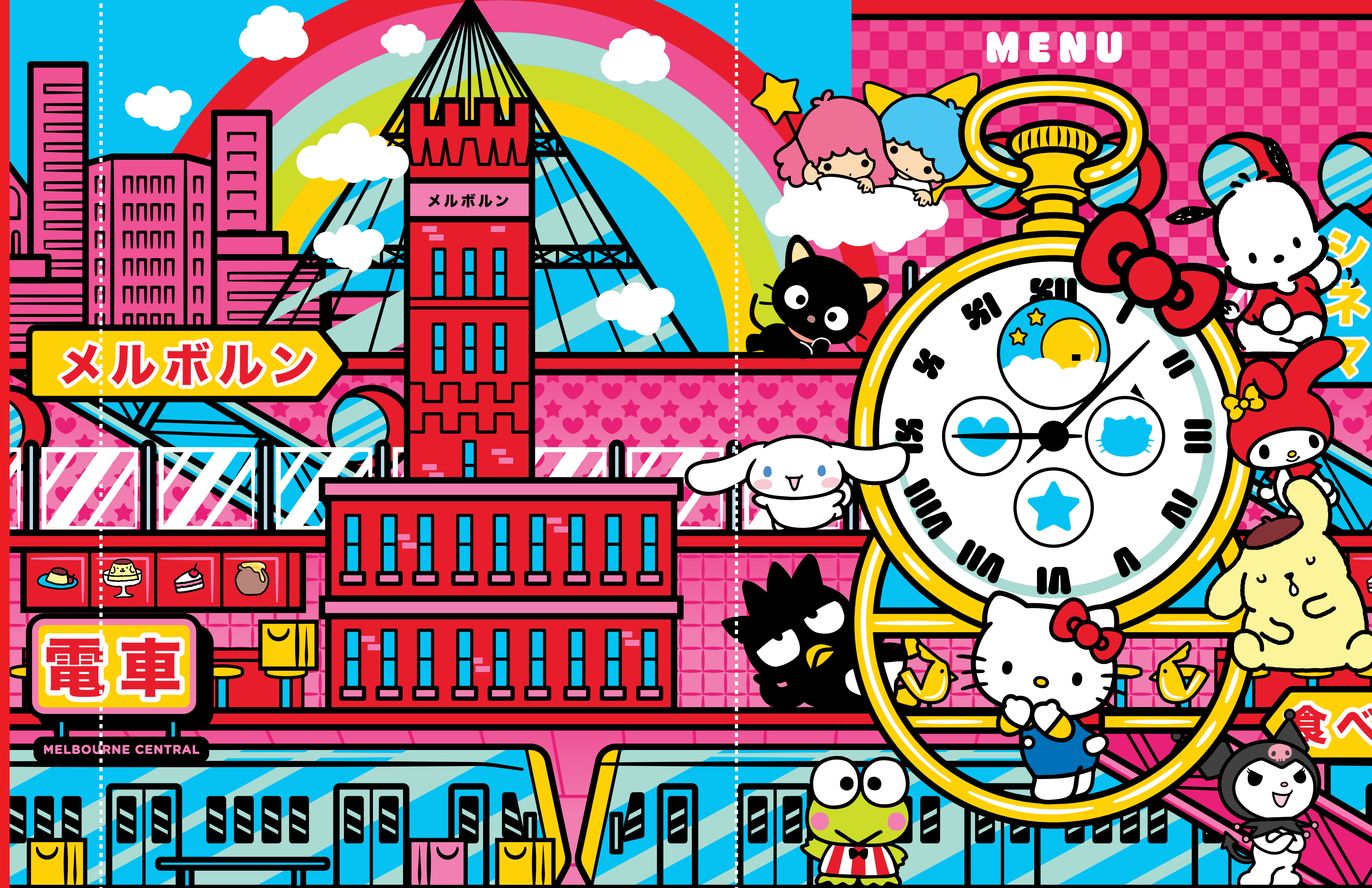
Welcome to the Hello Kitty and Friends Café – Australia’s first dining experience dedicated to Sanrio’s beloved characters. Located in the heart of Melbourne Central, this unique environment blends playful design, delicious Japanese-inspired food, and exclusive merchandise in a celebration of all things Hello Kitty. From themed bento boxes to strawberry sandos, each menu item has been crafted with care and creativity. Whether you’re here for a sweet treat, a photo-worthy moment, or to explore the whimsical world of Hello Kitty and her friends, this café promises something special for everyone. Sit back, relax, and let the magic begin.

**HOURS:** 10am – 8pm daily

@hellokittyandfriendscafeAU

[www.hellokittyandfriendscafeAU.com.au](http://www.hellokittyandfriendscafeAU.com.au)

Art Direction: Eddie Zammit  
Illustrations: Travis Price



BENTO BOXES

<b>Fried Chicken Bento</b>	<b>\$23</b>
Crispy fried chicken with spicy sauce, served with potato salad, egg omelette, broccoli, and fukujinzuke. (Egg)(G)	
<b>Pan-Fried Salmon Bento</b>	<b>\$28</b>
Pan-seared glazed salmon with teriyaki sauce, served with potato salad, egg omelette, broccoli, and fukujinzuke. (Egg)(Soy)	
<b>Unagi Bento</b>	<b>\$28</b>
Grilled eel with homemade unagi sauce, served with egg omelette and fukujinzuke. (Egg)(Soy)	
<b>Tofu Bento</b>	<b>\$20</b>
Crispy fried tofu with sweet soy sauce, served with potato salad, egg omelette, broccoli, and fukujinzuke. (V)(Soy)	

BURGERS

<b>Beef Brisket Burger</b>	<b>\$28</b>
Pulled beef brisket with melted cheese spicy jalapenos, caramelised onion coleslaw and chilli mayo, all served in a toasted brioche bun.	

CURRY

<b>Chicken Curry</b>	<b>\$23</b>
Japanese-style curry with chicken, juicy onion, broccoli, carrot and fukujinzuke. (G)	
<b>Tofu Curry</b>	<b>\$21</b>
Japanese-style curry with crispy fried tofu, juicy onion, broccoli carrot, and fukujinzuke. (V)(G)	

PASTA

<b>Rosé Pasta on Bread with Salmon</b>	<b>\$28</b>
Rosé bow-tie pasta topped with pan-seared salmon, served on cob bread. (VO)	

COLD & SALAD

<b>Soba Salad with Ebi Katsu</b>	<b>\$28</b>
Chilled soba noodles with yuzu soy dressing, cherry tomato, edamame, cucumber, carrot, cabbage and micro shiso topped with crispy Ebi katsu. (G)	
<b>Soba Salad with Avocado</b>	<b>\$23</b>
Chilled soba noodles with yuzu soy dressing, cherry tomato, edamame, cucumber, carrot, cabbage and micro shiso topped with avocado. (V)	
<b>Quinoa Salad</b>	<b>\$23</b>
Quinoa salad with mustard dressing, corn, cherry tomato, chickpeas, black beans, jalapeño, and ricotta cheese. (V)(GF)	

CROISSANT SANDO

<b>Egg Mayo Croissant Sando</b>	<b>\$16</b>
Buttery croissant filled with creamy egg mayo. (V)(Egg)	
<b>Ebi Katsu Croissant Sando</b>	<b>\$19</b>
Crispy deep-fried Ebi katsu, cos lettuce with tonkatsu sauce and mayo. (Shellfish)	
<b>Tuna Mayo Croissant Sando</b>	<b>\$16</b>
Croissant filled with savory tuna mayo.	

FOCACCIA SANDWICHES

<b>Basil &amp; Stracciatella</b>	<b>\$16</b>
Focaccia sandwich with basil pesto, stracciatella cheese, and tomato. (V)	
<b>Grilled Vegetable</b>	<b>\$16</b>
Focaccia sandwich with grilled eggplant, zucchini, red pepper, and tomato relish. (V)(DFO)	
<b>Poached Chicken &amp; Rocket</b>	<b>\$18</b>
Focaccia sandwich with poached chicken, rocket and sour cream sauce.	

POKE BOWLS

<b>Salmon Poke Bowl</b>	<b>\$23</b>
Seasoned rice topped with salmon, crispy lotus root, cucumber, seaweed salad, edamame, carrot, pickled cabbage, and onsen egg.	
<b>Poached Chicken Poke Bowl</b>	<b>\$23</b>
Seasoned rice topped with poached chicken, crispy lotus root, cucumber, seaweed salad, edamame, carrot, pickled cabbage and onsen egg.	
<b>Cooked Tuna Poke Bowl</b>	<b>\$23</b>
Seasoned rice topped with cooked tuna, crispy lotus root, cucumber, seaweed salad, edamame, carrot, pickled cabbage and onsen egg.	

SIDES

<b>Chips</b>	<b>\$10</b>
Crispy seasoned chips tossed in salt and vinegar, served with pink aioli.	

DESSERT

<b>Pumpkin Burnt Cheesecake (V)</b>	<b>\$16</b>
<b>Hello Kitty Cake</b>	<b>\$18</b>
<b>Croffle with Ice Cream</b>	<b>\$18</b>
Croffle with vanilla ice cream, strawberry jam and fresh cream.	

SIGNATURE DRINK \$10

<b>Bad Badtz Maru Oreo Milkshake</b>	<b>Kuromi Grape Cream Cheese Foam</b>
Oreo Milkshake.	Grape green tea slush with cheese foam.
<b>Cinnamoroll Icy Blue and Mango</b>	<b>My Melody Ice Strawberry</b>
Blue spirulina with mango and ice cream.	Iced strawberry with cream.
<b>Hello Kitty Apple Strawberry</b>	<b>Pom Pom Brûlée Milk Tea</b>
Apple & strawberry green tea slush.	Crème Brûlée Milk Tea.
<b>Keroppi Kreme Matcha</b>	
Matcha frappe.	

ICED TEA \$8

<b>Guava Lychee</b>
<b>Lemon</b>
<b>Oolong Milk</b>
<b>Peach</b>

MILKSHAKE \$9

<b>Chocolate</b>
<b>Strawberry</b>
<b>Vanilla</b>

REFRESHER \$8

<b>Passionfruit</b>
<b>Peach</b>
<b>Ribena</b>
<b>Strawberry</b>

MOCKTAIL \$12

<b>Blue Passionfruit Lemon Crush</b>
Blue curacao, passionfruit, lemonade.
<b>Creamy Strawberry</b>
Cream, sparkling water, strawberry syrup.
<b>Pinky Passionfruit</b>
Passionfruit, lemonade, with dehydrated strawberry crush.

FRESH JUICE \$7

<b>Apple</b>
<b>Mango</b>
<b>Orange</b>

COFFEE \$5

<b>Espresso</b>	<b>\$4</b>
<b>Long Black</b>	<b>\$4</b>
<b>Cappuccino</b>	
<b>Chai Latte</b>	
<b>Dirty Chai</b>	
<b>Double Espresso</b>	
<b>Flat White</b>	
<b>Hot Chocolate</b>	
<b>Latte</b>	
<b>Magic</b>	
<b>Matcha Latte</b>	
<b>Mocha</b>	
<b>Piccolo</b>	

ICED COFFEE & DRINKS \$8

<b>Iced Long Black</b>	<b>\$7</b>
<b>Iced Latte</b>	<b>\$7</b>
<b>Iced Chai Latte</b>	
<b>Iced Chocolate with Ice Cream</b>	
<b>Iced Coffee with Ice Cream</b>	
<b>Iced Honey Lemon Water</b>	
<b>Iced Matcha Latte</b>	
<b>Iced Mocha with Ice Cream</b>	
<b>Iced Strawberry Matcha</b>	
<b>Mango Smoothie</b>	

TEA \$5

<b>Camomile</b>
<b>Earl Grey</b>
<b>English</b>
<b>Green</b>
<b>Japanese Green</b>
<b>Jasmine</b>
<b>Oolong</b>
<b>Peppermint</b>

Note: All alternative milk \$1 extra